

4.1

0.4

0.0

4 N1 Ø 12.5

15

37 N2 Ø 6.3

C=76

4 N1 Ø 12.5 C=405

20 Ø 6.3 C/15

N2

N2

N2

N2

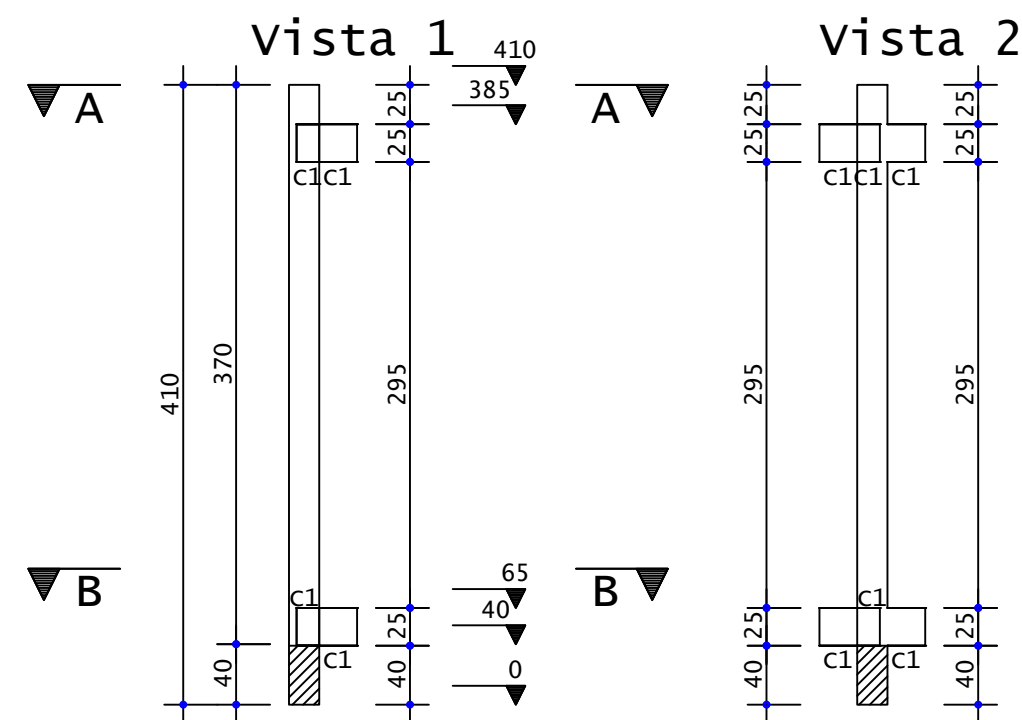
6 Ø 6.3 C/5

2 Ø 6.3 C/10

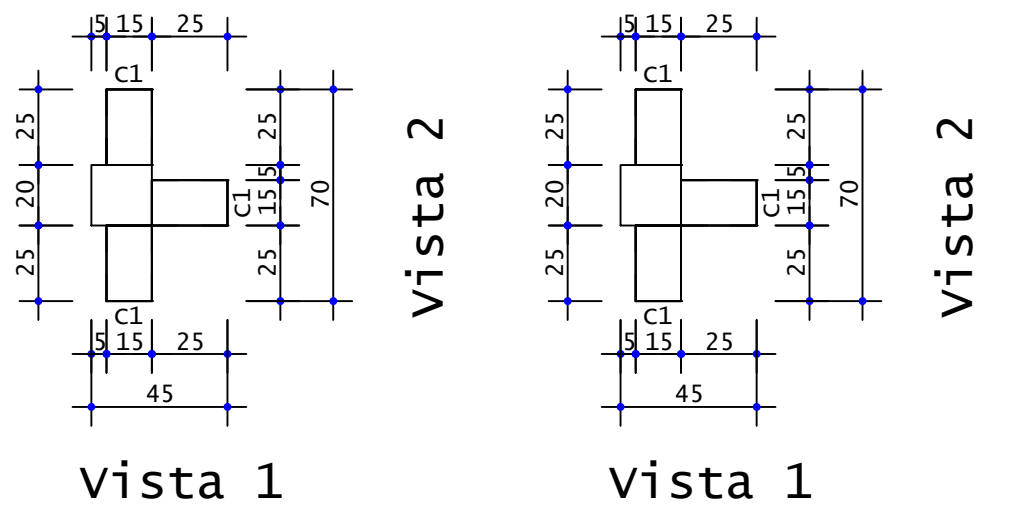
AÇO	POS	BIT mm	QUANT	COMPRIMENTO	
				UNIT cm	TOTAL cm
PP4	(X4)				
	50A	1	12.5	16	405
	50A	2	6.3	148	6480
					11248

RESUMO DE AÇO					
AÇO	BIT mm	COMPR m	PESO kgf		
50A	6.3	112	28		
50A	12.5	65	62		
Peso Total		50A =	90 kgf		

Quant	volume unit m3	volume total m3
4	0.22	0.88



Corte B-B



Technical drawing of a rectangular plate with the following specifications:

- Overall Dimensions:** Width 410, Height 410.
- Top Edge:** Dimension 4.1 from the top-left corner to the centerline of the first hole.
- Bottom Edge:** Dimension 0.0 from the bottom-left corner to the centerline of the first hole.
- Internal Features:**
 - A central square hole with dimensions $4 \text{ N1 } \emptyset 12.5$.
 - A square hole with dimensions 15 and 37 , and a note $\text{N2 } \emptyset 6.3$ and $\text{C}=76$.
- Right Edge:**
 - A vertical dimension of 405 from the top edge to the centerline of the first hole.
 - A vertical dimension of 20 from the centerline of the first hole to the centerline of the second hole.
 - Two holes with dimensions $6 \text{ } \emptyset 6.3 \text{ C/5}$ and $2 \text{ } \emptyset 6.3 \text{ C/10}$.

AÇO	POS	BIT mm	QUANT	COMPRIMENTO	
				UNIT cm	TOTAL cm
PP6 (X4)					
50A	1	12.5	16	405	6480
50A	2	6.3	148	76	11248

RESUMO DE AÇO				
AÇO	BIT mm	COMPR m	PESO kgf	
50A	6.3	112	28	
50A	12.5	65	62	
Peso Total		50A =	90 kgf	

Quant	Volume unit m3	volume total m3
4	0.20	0.81

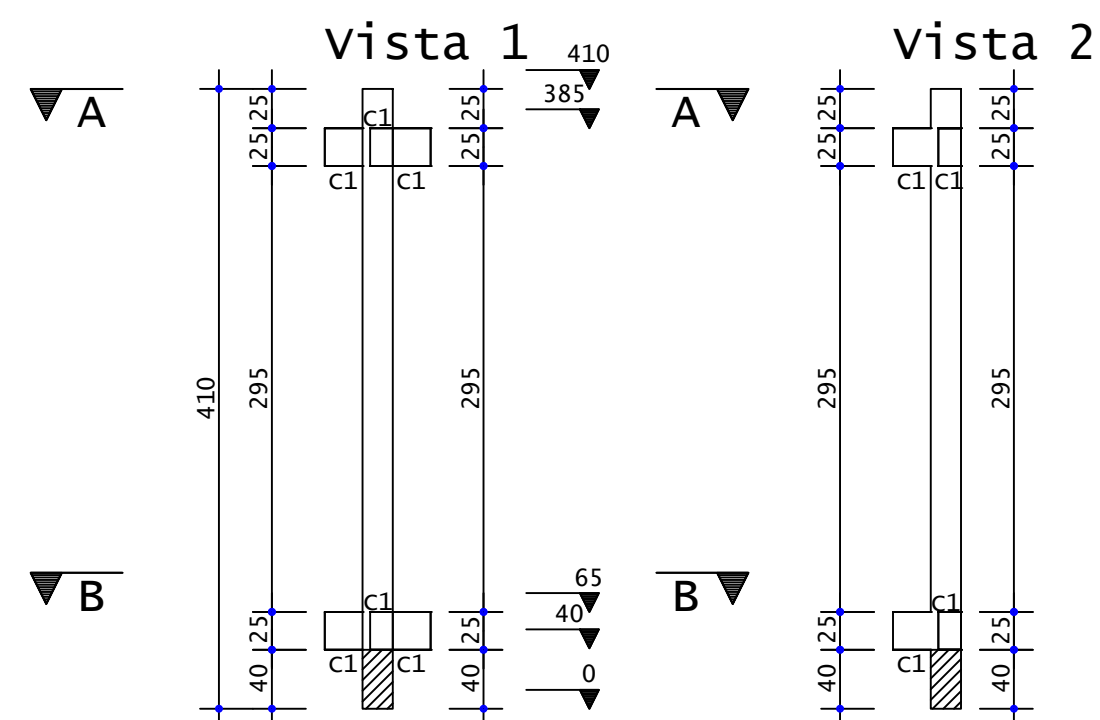
Technical drawing of a rectangular plate with the following specifications:

- Overall Dimensions:** 410 (height) x 405 (width).
- Top Edge:** Elevation 4.1.
- Bottom Edge:** Elevation 0.0.
- Internal Features:**
 - A central square hole with a side length of 12.5, labeled "4 N1 Ø 12.5".
 - A rectangular hole with a width of 15 and a height of 37, labeled "15", "37", "N2", and "C=76".
- Right Edge:**
 - A vertical red line at a distance of 20 from the right edge, labeled "4 N1 Ø 12.5 C=405".
 - Two vertical blue lines representing holes, labeled "N2", "Ø 6.3", and "C/15".
 - Dimensions 20, 6.3, and C/15 are indicated between the vertical lines.

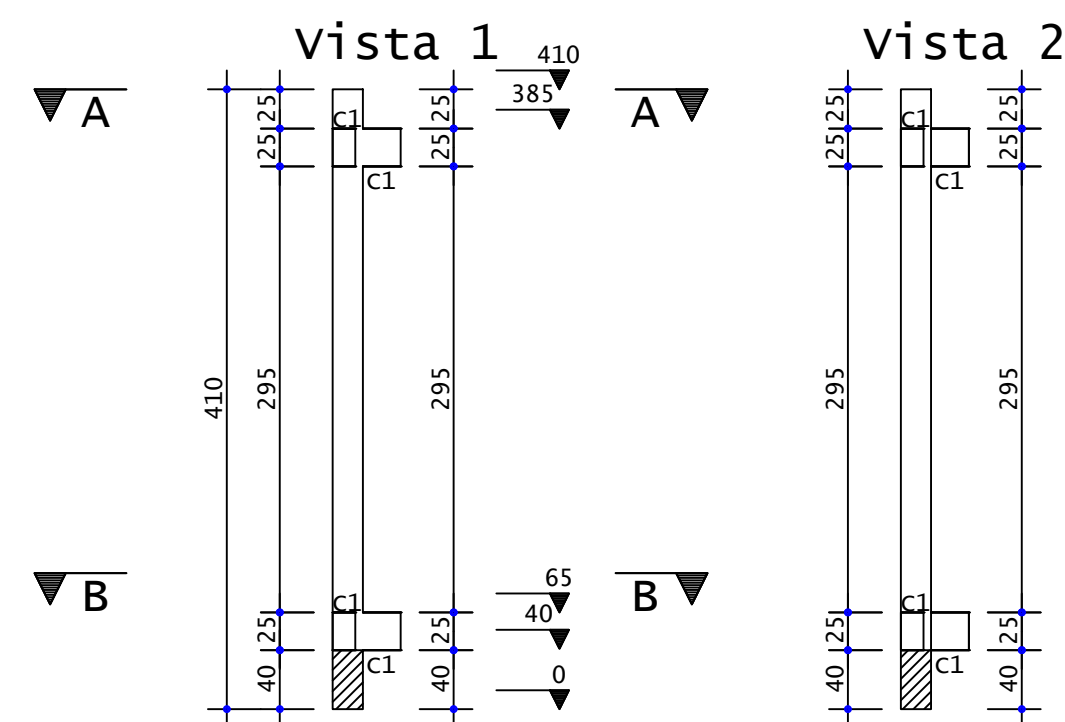
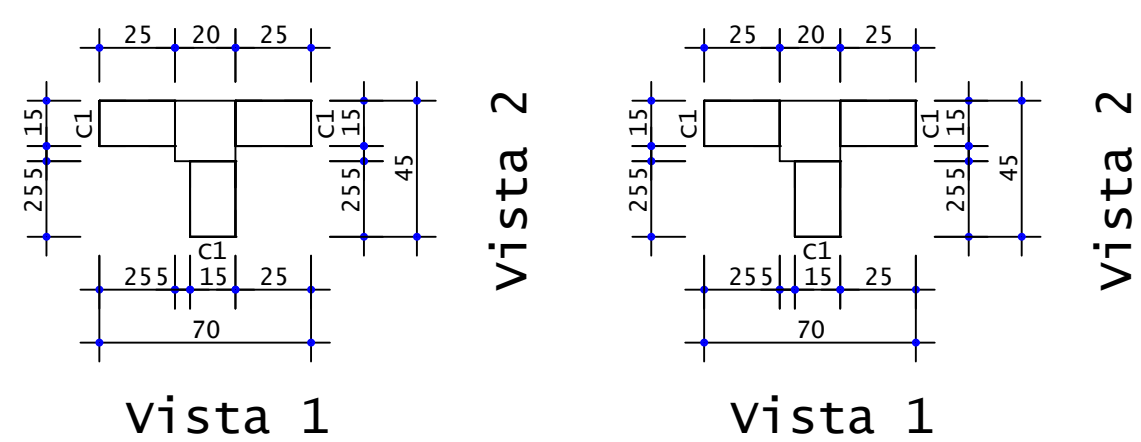
AÇO	POS	BIT mm	QUANT	COMPRIMENTO	
				UNIT cm	TOTAL cm
PP5	(X6)				
	50A	1	12.5	24	405
	50A	2	6.3	222	76
					9720
					16872

RESUMO DE AÇO				
AÇO	BIT mm	COMPR m	PESO kgf	
50A	6.3	169	41	
50A	12.5	97	94	
Peso Total		50A =	135 kgf	

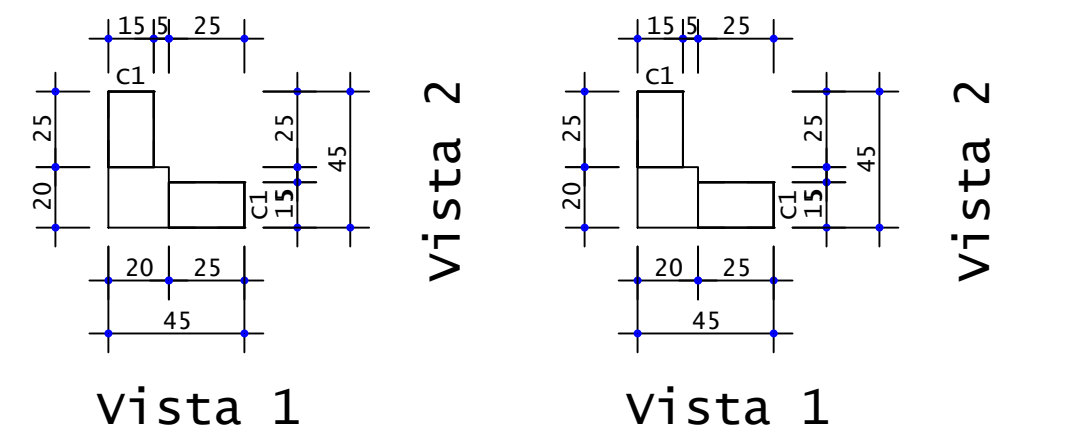
Quant	Volume unit m3	Volume total m3
6	0.22	1.32



Corte B-B



Corte B-B



É PROIBIDA A REPRODUÇÃO DESTE PROJETO, SEM A AUTORIZAÇÃO DO AUTOR
LEIS Nº 5194 DE 24/12/1966 E Nº 9610 DE 19/02/98

EMPRESA CONTRATADA:	RESPONSÁVEL TÉCNICO:	PROPRIETÁRIO:
	LUIZ FERNANDO C. MEGIOLARO ENGENHEIRO CIVIL CREA - PR 179004/D	PREFEITURA MUNICIPAL DE MARMELEIRO CNPJ: 76.205.665/0001-01
	OBRA/ENDEREÇO:	
GINÁSIO EMEF PERSEVERANÇA RUA DAS GRÁPIAS, 160, BAIRRO ARAUCÁRIA, MARMELEIRO - PR. CEP 85615-000		
KOLF SERVIÇOS DE ENGENHARIA CNPJ: 07.555.412/0001-37 RUA FREI EVERALDO, 5555, SALA 1 CHOPINZINHO - PR - 85560-000 (46)9 9908-2448 GABRIEL@COLFERAI.ENG.BR	PROJETO:	DES. LUIZ
	PROJETO ESTRUTURAL - PRÉ MOLDADO	ESCALA INDICADA
	CONTEÚDO DA PRANCHA: DETALHAMENTO PILARES;	DATA OUT/2025
		FOLHA 08/16
		REVISÃO 01